

UNFINISHED TRADER
6500DWT PRODUCT OIL**PRINCIPAL PARTICULARS**

Length Overall	100.429 m
Length Between Perpendicular	95.069 m
Beam Noulded	18.0 m
Depth Moulded	9.5 m
Summer Draft	6.8 m
Height from Keel	34.61 m
Built	China
Delivery	
Gross Tonnage	4445
Net Tonnage	1963
Class	American Bureau of Shipping
Notation	ABS + A1E Oil Tanker for Product Oil & Chemical Type 3 (+2K), ESP, FP, <60C. +AMS+ACC, VEC
Flag (Port of Registry)	Singapore
Call Sign/IMO	9V9452 / 9659517

PERFORMANCE

Speed Max (Loaded)	12.6 Knots
Speed (MCR 85%)	12.0 Knots
Edurance	5000 Nm
M/E MCR (85%)	11.50 Ton/Day
Aux Engines	1.10 Ton/Day

CARGO CAPACITIES

Deadweight	6842 t
Cargo Tanks	7714 m3
Slop tanks	
Fuel Oil Tanks	300 m3
Light Diesel Oil tanks	139 m3
Lube Oil Cir/Clean tanks	52 m3
Fresh Water tanks	180 m3
Technical Fresh Water	220 m3
Water Ballast tanks	2895 m3

PUMPS

Cargo Pumps	2 sets twin-screw type 750 m3/hr 90 mLc, SG 0.8 t/m3, 2- 403kw, 1450 r/min 1 set twin-screw type 300 m3/hr 90 mLc, SG 0.8 t/m3, 1-230kw, 1450 r/min
Ballast Pump	2 set Centrifugal type , 300m3/h Horizontal selfpriming
Slop Stripping Pump	14 sets, air-drive type, max 7 m3/hr

MACHINERY

Main Engine	(2) set, Daihatsu 1618 kw X 750 rpm
Main Generators	3 Sets Caterpillar 345 KW @ 1800 rpm / 450V / 3PH / 60Hz
Emergency Generator	1 Set Caterpillar 75 KW @ 1800 Rpm 450V/3Ph/60 Hz
Auxiliary Boiler	(1) set, Vertical, water tube type 4000 kg/m
Air Compressors	(2) sets for Starting, piston type 25 m3/hr (1) set for Emergency, motor-driven, 25 m3/hr (1) set for Deck, motor-driven, 25 m3/hr
Bow Thruster	1 x 250 kw, 1750 rpm, FPP driven by electric motor Diameter of tunnel to be 1000 mm
Steering Gear	1 x Electro-hydraulic piston type
Propeller	1 x Fixed Pitch type, abot 3.16 m dia, 214.3 rpm
Rudders	high performance streamline type

DECK EQUIPMENT

Anchor Windlass	2 x hydraulic type, each with 1 gypsy wheel 1 hawser drum & 1 warping head 9.2 t X 9m/mim at gypsy wheel, 5 t X 15 m/min with local control
Mooring Winch	2 X Hydraulic type each 1 hawser drum & 1 warping head
Deck Crane	Single Jib Type 2.0 t X 12 m/min, 15m flowboom, slewing angle 360
Provision Hoist Davit	Single Jib Type, Electric Motor, 1.0 t X 12 m/min, 8.0M outreach
Anchors	2 X 3060 Kg stockless anchors, SPEK type 1 x 3070 Kg stockless anchors, SPEK type
Chain Cable	2 stud chain cables for bower anchors 44 mm diameter, Grade U3, total length 495 m

ACCOMMODATION

Berths	Capt Class	2 x 1 berth cabin =	2
	Officer Class	7 x 1 berth cabin =	7
	Other Class	7 x 1 berth cabin =	7
Total			<u>16</u>
Hospital		1 x 1 berth cabin =	1

RADIO AND NAVIGATION EQUIPMENT

	GMDSS	1 set
	Flet 77/ Globe i250	1 set each (Sat Voice & Mail)
	Inmarsat C / SSAS	2 set Furuno Felcom 15
	MF/HF DSC watch receiver	1 set Furuno FS 2570
	VHF Radio	1 set Furuno FM-8800S
	Navtex Receiver	1 set Furuno NX-700A
	SART	2 sets 9 GHz
	EPIRB	1 set SARACOM
	Voyage Data Recorder (VDR)	1 set VR-3000
	Portable VHF Radios	3 sets Mc. Murdo
	Radar	1 x Furuno X Band FAR 2127 1 x Furuno S Band FAR 2127S
	Weather Fax	1 x Furuno Fax-408
	AIS	1 x Furuno FA 150
	Doppler Log	1 x Furuno DS-801
	Echo Sounder	1 x Furuno FE-701
	ECDIS	1 x Furuno EC1000C
	Auto Pilot	1 x Tokimec
	Gyro Compass	1 x Tokimec
	Magnetic Compass	1 x Tokimec/SH
	GPS	1 x Furuno GP 50

Fire Fighting

Fire/Foam Pump	1 set Vertical centrifugal pump with self-riming about 130 m3/hr X 9 bar
----------------	---

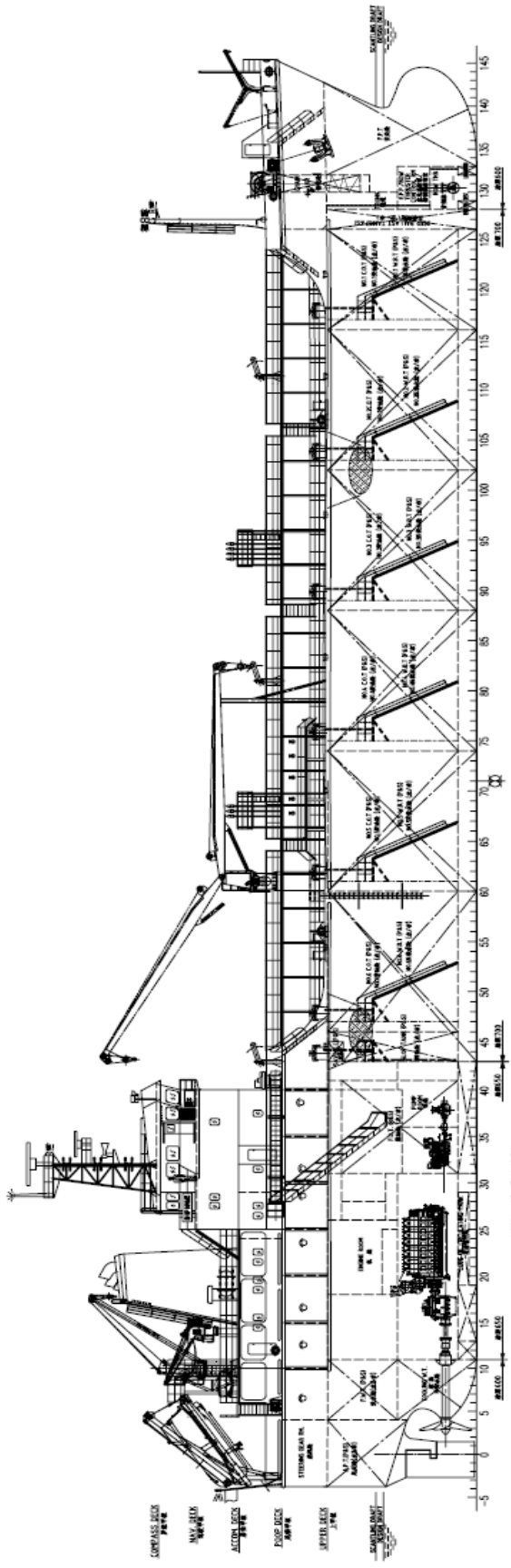
INTERNAL

Tank cleaning system	2 electric cleaning pump, 3 portable cleaning machine
Heating for cargo/slop tanks	1 set oil fired forced draft type steam boiler 4000 kg/hr
Gas dedection system	2 sets portable gas dedector
Tank Sounding system	Level and ullage measurement system, closed type
Pressure measure system	1 pressure sensor on top of each cargo/slop tank

MISCELLANEOUS

Liferafts	2 X 16 person inflatable life rafts
Rescue Boat	1 x 6 men powered by inboard engine
Incinerator	1 set IMO approved type capacity 400,000 kcal/hr
Oily Water Separator	1 EC/USCG approved type c/w 15 ppm alarm
Sewage Treatment Plant	1 set 20P size biochemistry type with uSCG cert

Particulars are believed to be correct but not guaranteed. All figures given are approximate only. Owners reserve the right to amend the specifications without notification.

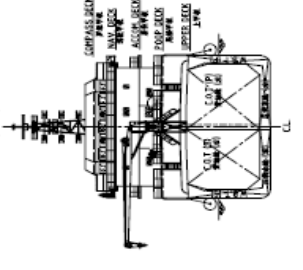


COMPASS DECK
NAV. DECK
ACTING DECK
FOUR DECK
FIFTH DECK
SEVENTH DECK
SIXTH DECK

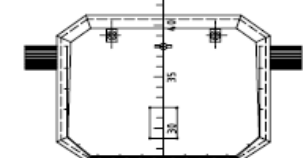
MAIN PARTICULARS

LOA	abt 316 m
LPP	94.20 m
B	18.00 m
DEPTH	5.50 m
DESIGN DRAFT	5.50 m
SCANTLING DRAFT	5.50 m
HEAD WEIGHT AT DESIGN DRAFT	~5500 t
HEAD WEIGHT AT SCANTLING DRAFT	~4200 t
HC/R	2770MM x 700 r/mm
TOTAL SPEED	12.60 knots
SERVICE SPEED	11.80 knots
ENDURANCE	5000 n.m.
EQUIPMENT	5% IN INCLUDING ONE PILOT
CLASSIFICATION	REG. OF COMMERCE - E.P. - 69°C
NAVS	UNRESTRICTED

LOOKING FORWARD



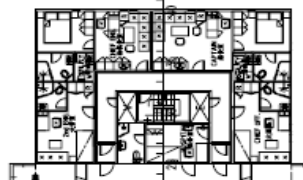
COMPASS DECK



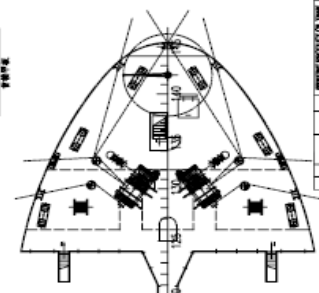
NAV. DECK



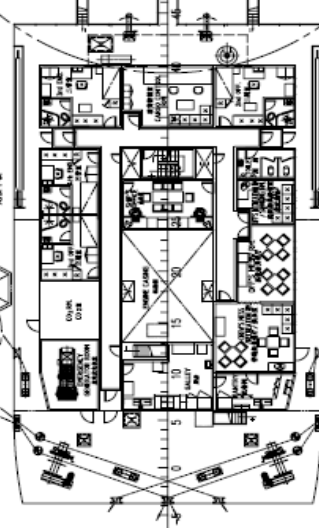
ACCOMMODATION DECK



FORECASTLE DECK



FOUR DECK



DESIGNER	...
CONTRACTOR	...
DATE	...
SCALE	...
PROJECT NO.	...
SHIP NO.	...
SHIP NAME	...
SHIP TYPE	...
CLASSIFICATION	...
REG. NO.	...
REG. NAME	...
REG. ADDRESS	...
REG. PHONE	...
REG. FAX	...
REG. E-MAIL	...
REG. WEBSITE	...
REG. CONTACT	...
REG. COMMENTS	...