



KHERSON STATE PLANT «PALLADA»

NEW FLOATING DOCK UNDER CONSTRUCTION

**COMPOSITE FLOATING DOCKS
Projects: 1760, 1760П, 1760ПБ, 1760КР**



Purpose: docking of the vessels, ships, submarines and with docking weight up to 8500 (9000) t.

Dock construction is carried out under the project approved by one of International Classification Societies Строительство (ABS, BV, RINA, RMRS) and under its supervision.

Options for using the docks:

- Ship-repair option.
- transferring—for the movement the vessels, ships, submarines and other floating craft from water to the shore and back.
- repairing transferring.
- dismantlement – for ships, vessels, submarines and floating craft dismantlement, including facilities with nuclear power plants.

Design features: the pontoon of the dock is made from marine reinforced concrete, and wing-walls from shipbuilding steel. Such combination of materials provides *minimal operational expenses during whole lifetime (more than 50 years)*.

Depending on the purpose, the floating docks of this series have different wing-walls heights, the maximum immersion depth and lifting capacity from 6000 to 9000 tons.

The dock can be self-propelled regarding power supply (have two diesel generators 290-300 kW each, and an emergency diesel-generator 100 kW) and can use shore power supply (equipped only with emergency diesel-generator).

Long-term operation in various climatic zones confirms the high reliability, durability and repairability (by crew of the dock) floating dock of this family.

A lead floating dock Project 1760 was built and delivered to the Customer in 1968, and this dock is 52 years in operation!

Totally 43 floating docks were built, 39 floating docks are in operation.

The largest in the world series of floating docks!



Floating docks projects 1760, 1760II, 1760IIB, 1760KP that now in operation (Table No. 1).

Table No. 1

Country	Q-ty., pcs.
Angola	1
Bulgaria	2
Vietnam	1
Georgia	1
Latvia	1
Lithuania	1
Qatar	1
Namibia	2
Russian Federation	18
Cyprus	2
Republic of Korea	2
Ukraine	2
Turkey	1
Croatia	2
South Africa	2
Total in operation	39

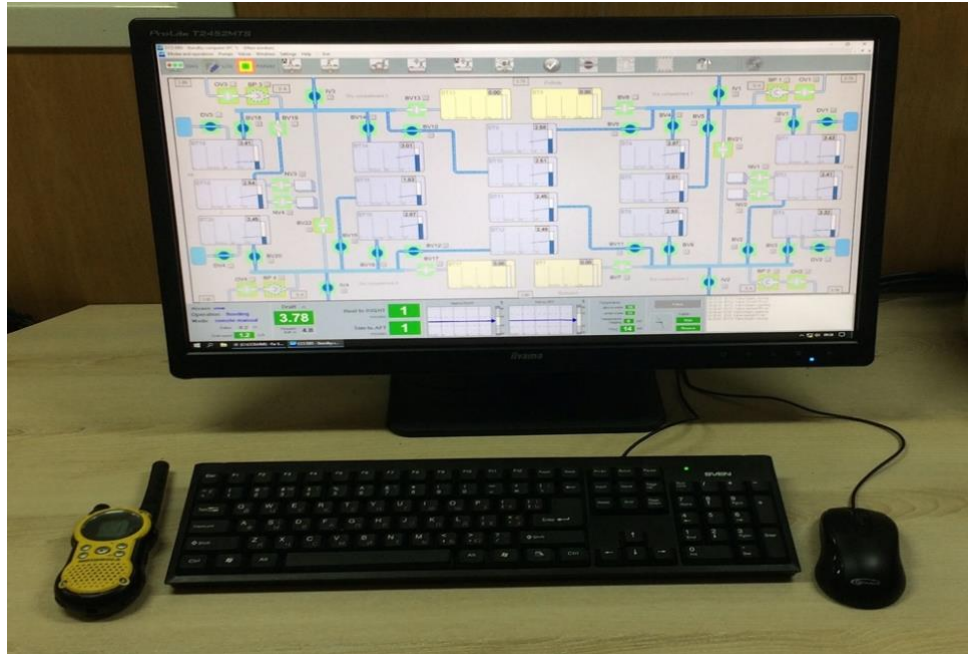
Currently, the KSP «Pallada» building a reinforced concrete pontoon of the floating dock Project 1760KP, Plant No 02064 (features see Table No.2).

The readiness of reinforced concrete pontoon is 65%.

Table No. 2

Designation	Features
Dock lifting capacity, t	8,500
Class	IACS
Dock length, m	139.5
Dock length with crinolines, m	155.0
Dock breadth, m	32.4
Dock breadth between wing-walls, m	26.0
Pontoon height along CL, m	4.8
Height of the dock from MD to TD, m	12.8
Maximum immersion depth, m	11.8

The computer ballast control system ensures safe operation during docking and undocking operations with docking vessel and in real time controls the list and trim, as well as the deflection and bending of the dock.



For safe operation of the dock, a free-floating mode is used, which ensures unsinkability of the dock at maximum immersion with open receiving and distribution valves of the ballast compartments.

In the event of an emergency (lack of voltage on the dock, jamming or failure of the receiving and distribution valves), the dock stays afloat.



Installation of the dock at the place of operation can be carried out on anchor chains with mooring anchors or pawls with dolphin rings (not in scope of supply).

Delivery of the dock to the place of operation is possible by sea towing or on the deck of the carrier ship.

Modification and upgrade.

At the request of the Customer, the following changes and/or upgrades may be made to the dock design:

- increased wing-wall height and maximum immersion depth;
- reinforced concrete pontoon extended to 148.5 m;
- in the bow and/or stern of the pontoon along the sides or in the center line;
- technological niches are provided for servicing retractable devices, fairings for sonar's and a propeller-steering complex;
- steel crinolines installed in the bow and stern of the pontoon;
- on the main deck there is a removable overpass with rails for moving ship trolleys;
- two dolphins are installed on one of the sides for unfastening the dock on the pawls at the place of operation.
- the dock is equipped with additional devices and technological systems for ship repair.
- two portal traveling cranes with a lifting capacity of 7.5 t each can be installed on the dock.

Dock delivery time on the conditions of stage payment: 8-12 months, depending on the construction Specification of the dock.

In our floating docks you will always stay afloat!

Contact:

Mr Grygory Klebanov,

Deputy Director,

GSM /Viber/ WhatsApp/Telegram/Signal: +380 50 594 2582

E-mail: gklebanov@gmail.com

<http://linkedin.com/in/grygory-klebanov-bb451429>

www.pallada-doc.com

www.facebook.com/palladadock

<https://vimeo.com/411990132>

<https://vimeo.com/254051091>

<https://vimeo.com/218232115>