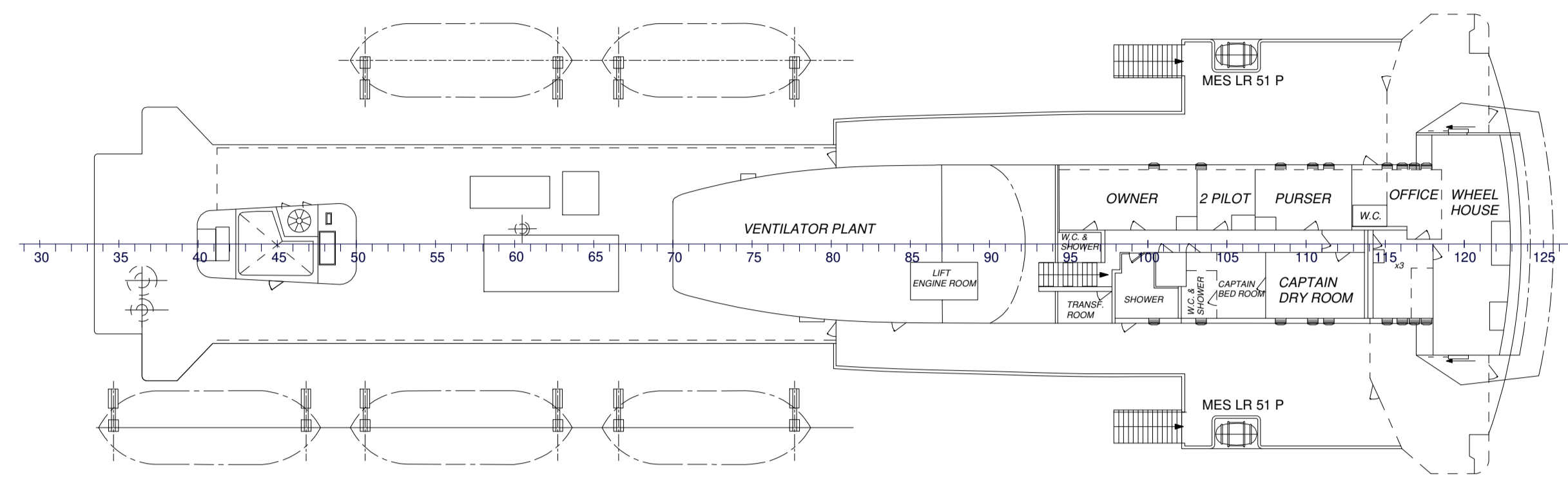
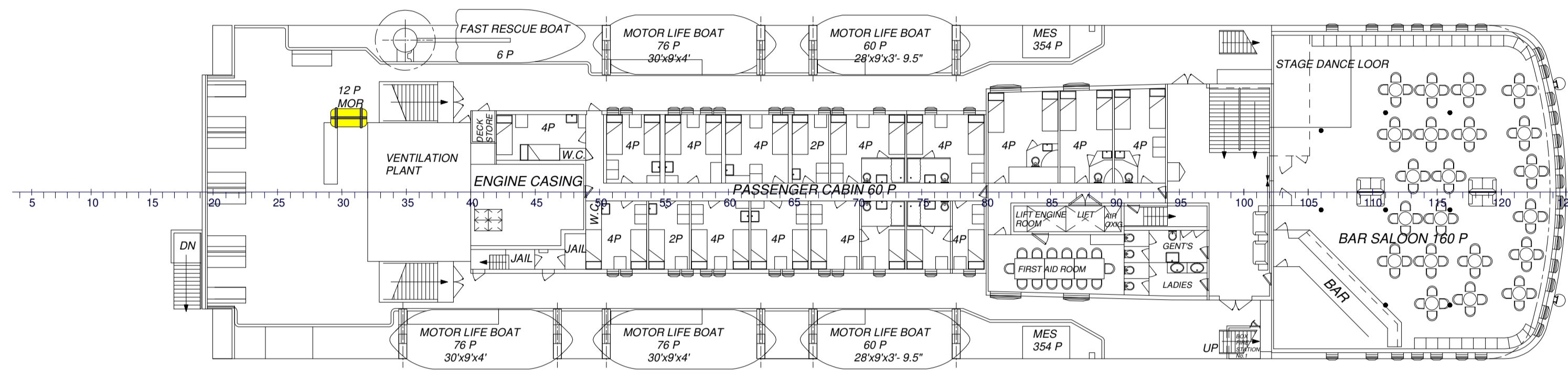


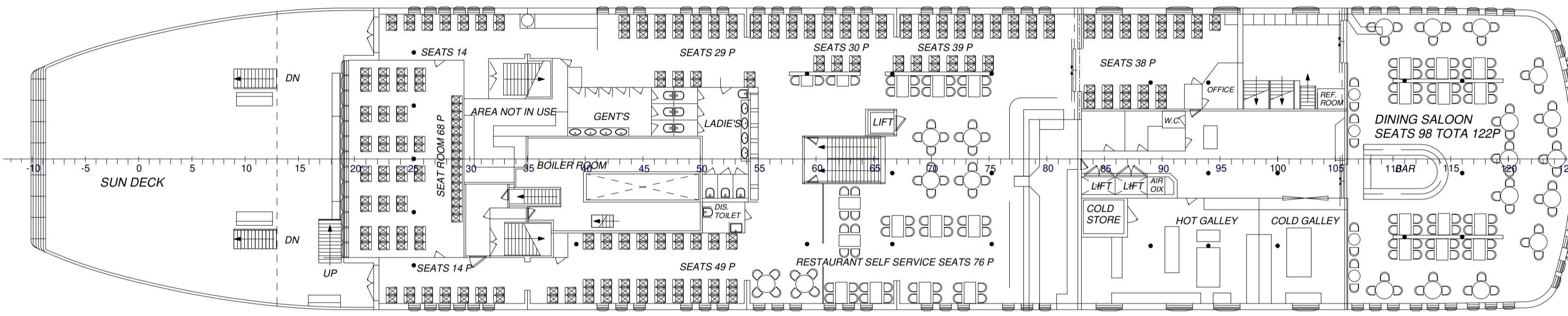
DECK 9  
 DECK 8  
 DECK 7  
 DECK 6  
 DECK 5  
 DECK 4  
 DECK 3  
 DECK 2  
 DECK 1



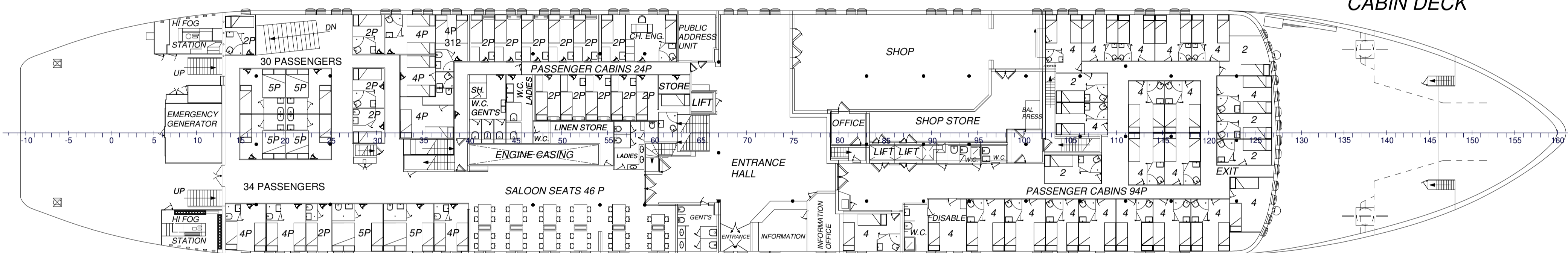
DECK 8  
 BRIDGE DECK



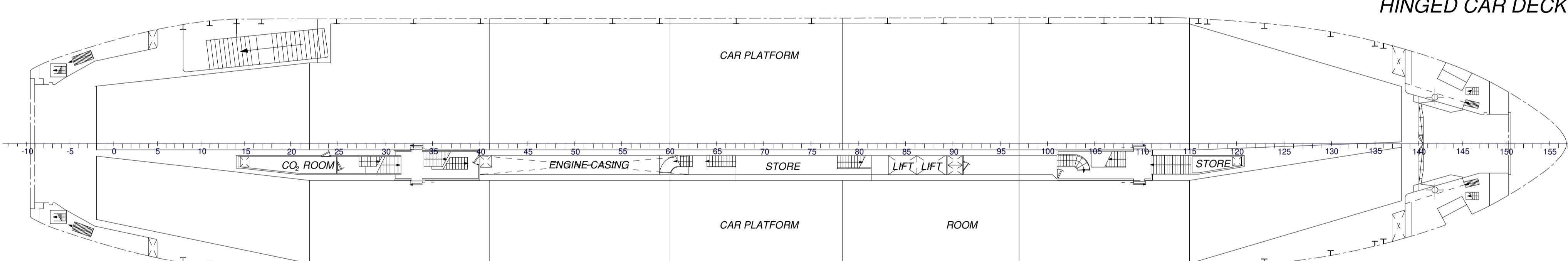
DECK 7  
 BOAT DECK



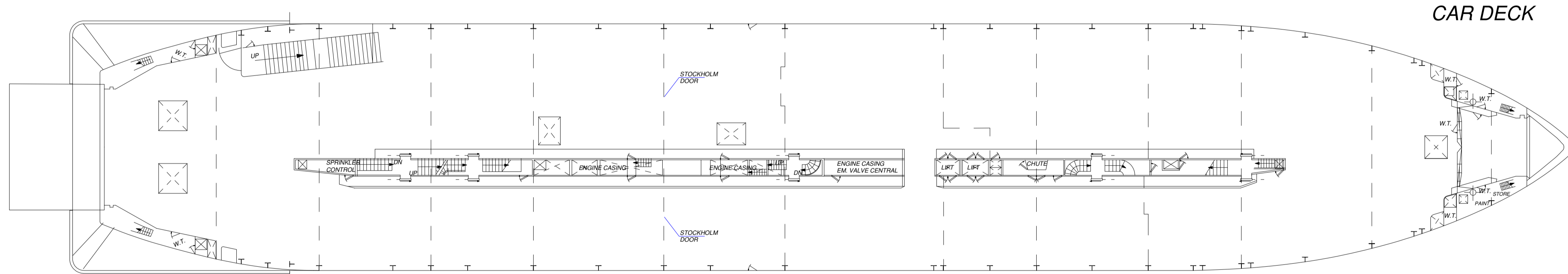
DECK 6  
 RESTAURANT DECK



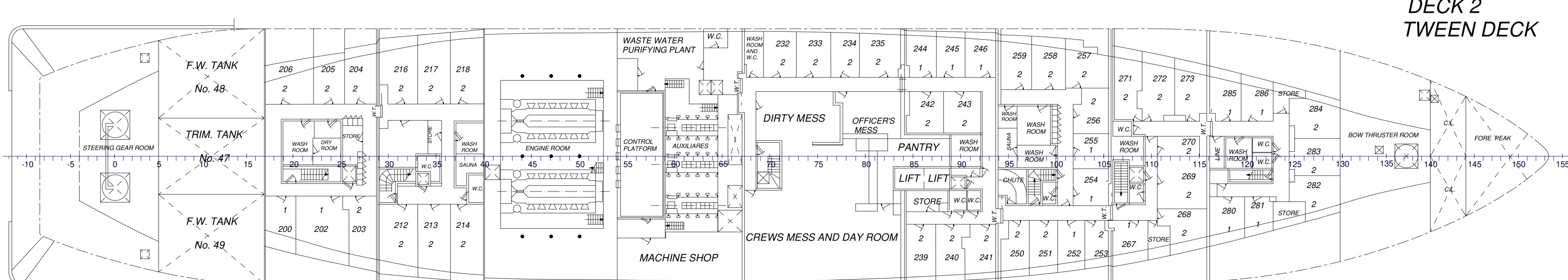
DECK 5  
 CABIN DECK



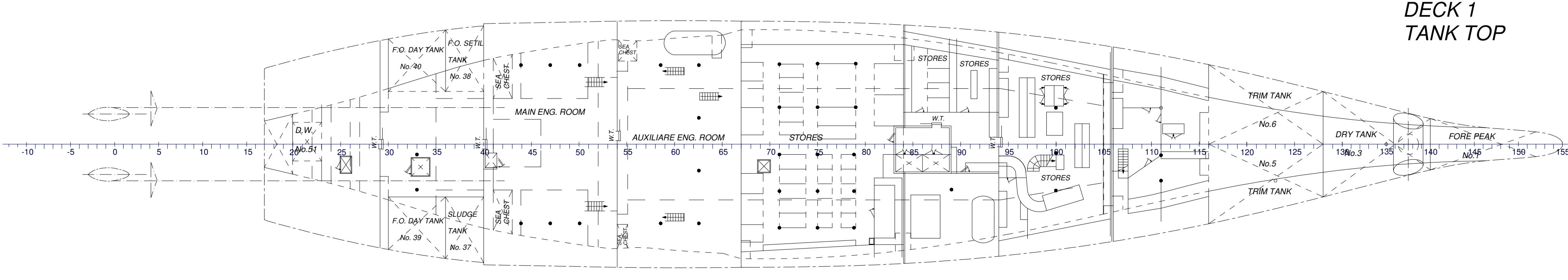
DECK 4  
 HINGED CAR DECK



DECK 3  
 CAR DECK



DECK 2  
 TWEEN DECK



DECK 1  
 TANK TOP

**MAIN PARTICULARS**

LENGHT OA	109,35 m
LENGHT BP	96,50 m
BREADTH MLD TO CAR DECK No 3	17,20 m
DEPTH MLD TO CAR DECK No 3	6,00 m
DEPTH MLD TO CABIN DECK No 5	11,00 m
DRAFT MLD	4,70 m
DISPLACEMENT	4677,5 Tons
DEADWEIGHT	985,6 Tons
IMO No	7128887
CLASS	POLISH REGISTER
POWER	2X4000 BHP
BUILT	1972
GROSS	6748
NET	2189

Drawing with CAD System. Manual changes are not allowed.

**ALCON**  
ENGINEERING & CONSULTING

Sede operativa: via C. Battisti, 174  
 74121 Taranto - ITALY  
 Mobile +39.330.330.194 - +39.335.79.09.142  
 www.alcon-engineering.com  
 info@alcon-engineering.com

COMP. - SEAMED TRADING SHIPPING S.r.l.

**M/V " ST. DAMIAN "**  
 (EX IONIAN SPIRIT)  
 GENERAL ARRANGEMENT

0	12/07/16		MC	MC	SA
Rev.	Date	Causale	Disegned	Checked	Approved
DOCUMENTO N.			16 63 7 0 0 1 0		
Scale: 1:200		Sheet: 1 / 1		Format: A0	