

OSV OCEANOGRAPHIC AND GEOLOGICAL SURVEY VESSEL FOR SALE

Particular

Length overall (m)	40.00
Beam (m)	9.00
Depth Moulded (m)	3.85
Max Draft (m)	2.8
Hull / Superstructure Design	Marine Aluminium
Engines (kW)	2 x 1 000
Propulsion	CPP
Fuel Capacity (lts)	75 000
Fresh water capacity (lts)	10 000
Crew	8
Scientists	9
Speed at full load (knots)	15
Range (Nm)	4000 @ 10 kts
GRT/NRT	429T
DWT	350T
Keel laid & Year build	2015

Classification

BUREAU VERITAS: I HULL ● MACH ●

AUT- UMS DP AM/AT SPECIAL SERVICE

Type Of Mission

To know the Maritime Territory

- Oceanographic and geological survey
- Hydrographic survey
- Fisheries research
- Supporting scuba diving operations
- Subsea infra-structure survey
- Environmental control
- Supporting anti-pollution activities
- Maritime surveillance and communication
- General patrol
- External fire-fighting

To manage the Maritime Territory

- General patrol
- Securing harbours and waterways
- Search, rescue and recovery
- Securing undersea energy infrastructure
- Support and assistance
- Responding to environmental pollution

Characteristics

- 9 Crew + 9 Personnel
- 15 knots
- 4 000 nm @ 10 knots
- Laboratories : 35 m²
- Aft deck : 95 m²

Communication Equipment

- 1x SSB FURUNO FS1575 DSC with NBDP
- 2x VHF FURUNO FM8900 DSC Class A
- 3x Portable VHF ICOM IC-M71
- 1x GMDSS VHF portable
- 1x NAVTEX FURUNO NX 700 PRO
- 1x AIS Tx/Rx class A system
- 1x Standard C GMDSS type FELCOM 18

Navigation Aids

- 2x Radar FURUNO FAR 2117-ARPA
- One ECDIS FURUNO FMD 3200
- 1x Echo-sounder FURUNO FE700
- 2x Gyrocompass SIMRAD GC80
- 2x DGPS SIMRAD MX 512
- 2x Wind speed and direction
- 1x Motion Reference Unit KONGSBERG MRU 5
- 1x Speed log type FURUNO DS80
- 1x Dynamic positioning system

Scientific Equipment

- 1x Combined GPS and inertial technology KONGSBERG SEAPATH 330
- 1x Single beam Echosounder KONGSBERG EA 400
- 1x Multi Beam Echo Sounder KONGSBERG EM2040
- 1x Dual Frequency Side Scan Sonar
- 1x Acoustic Doppler Current Profiler
- 1x Sound velocity probe
- 1x CTD & Sound Velocity profiler
- 1x Nansen Bottle (Rosset 12 x 8 liter)
- 1x Bathy Thermograph
- 1x Wave and Tide Gauge
- 1x Automatic Weather Set Station
- 1x ROV SAAB Seaeye Falcon standard
- 1x Work boat

Crane/Winches

- 1x Hydraulic deck crane 23 tm ALM – 5T @ 4.1 m
- 1x Hydraulic oceanographic winch 350 m/3.4 mm
- 1x Hydraulic hydrographic winch 350 m/3.4 mm
- 1x Hydraulic general service winch 500 m/10 mm

Work Deck/ Specific Room

Aft work deck:	96 m ²
Wet laboratory:	17 m ²
Dry laboratory:	18 m ²

Safety/ Deck Equipment

- 2x Radar transponders
- 2x Beacon EPIRB
- 4x 20-men liferafts
- 1x 6-men Fast Rescue Boat

Power Supply

Main.....3 X 230 Kw-50 Hz genset

Air Conditioning

Living and operation rooms are air-conditioned

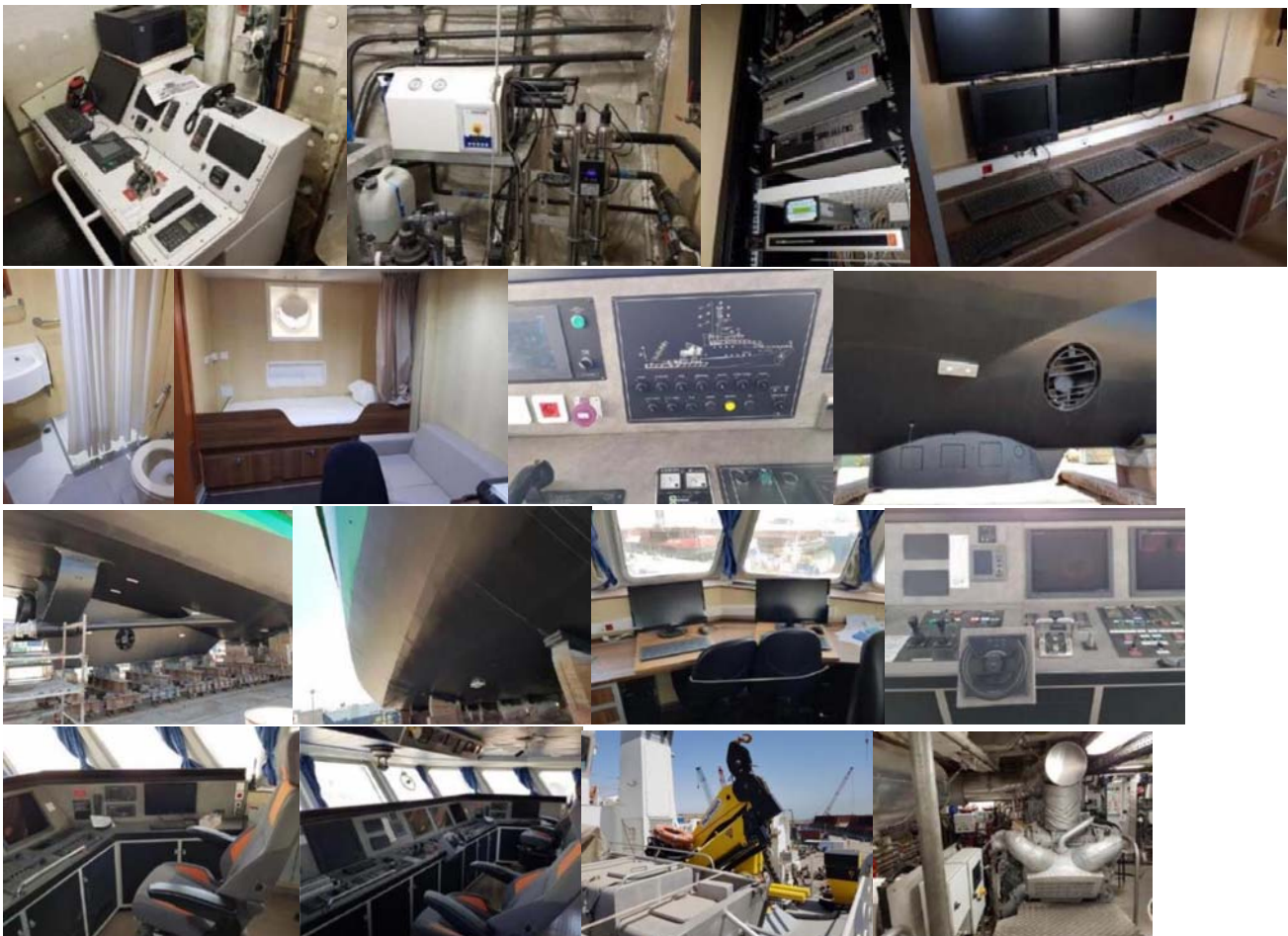
Notice:

Keel laid & build year in 2015, all engine are new purchase but expired validation and warranty. Engine have low running hours. MTU technicians will inspect the engine prior to hand over.

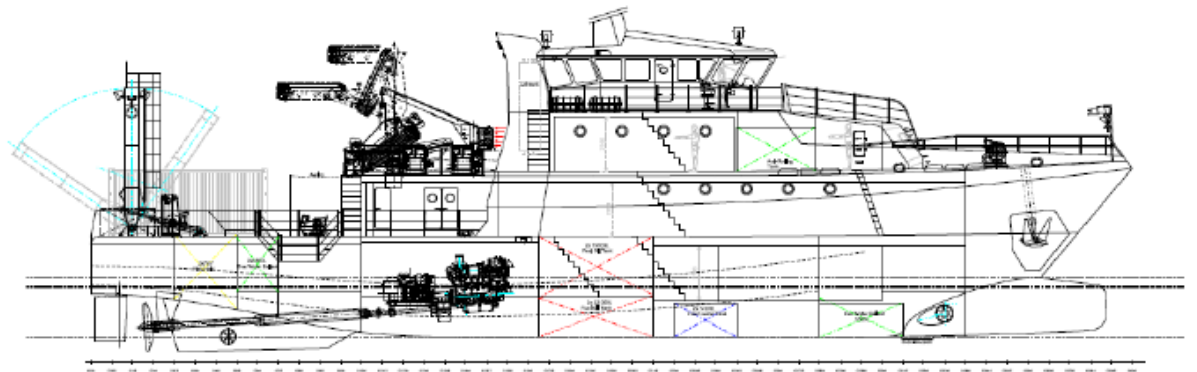
Expecting price USD 16 millions for sale and negotiable. Original price USD 25 millions from procure till keel newbuilt.

Price include: Commissioning, Pre purchase survey cost , Reactivation cost.

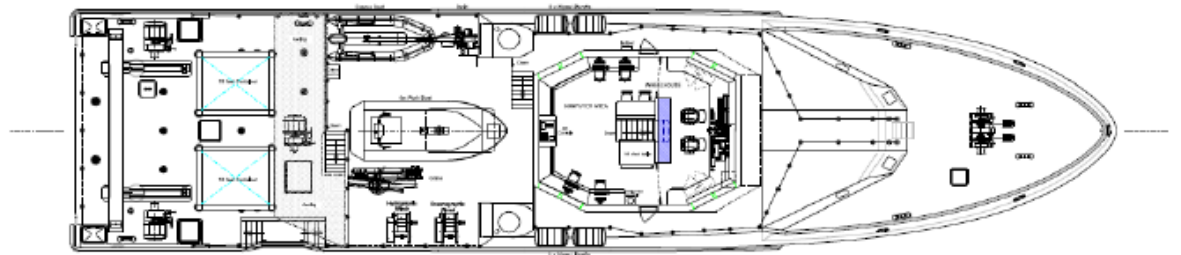
The survey through class and relevant OEMs



Elevation



Bridge deck



Upper deck



Main deck



Under deck

