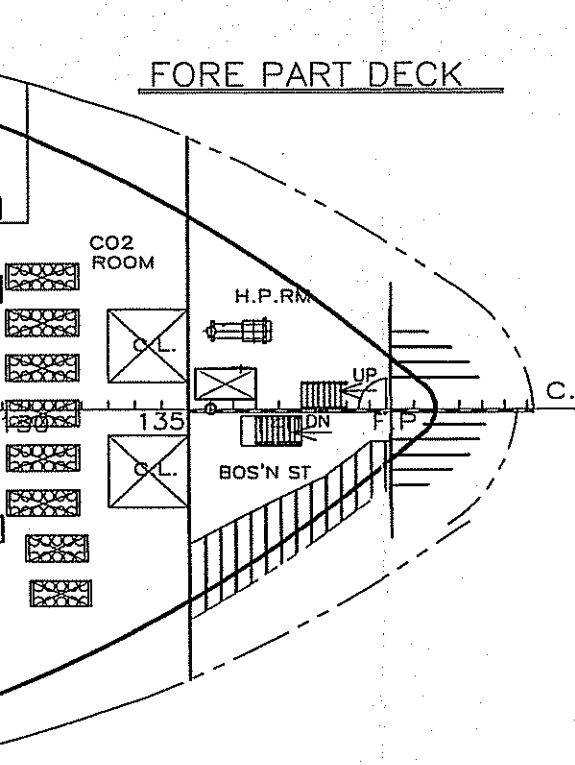
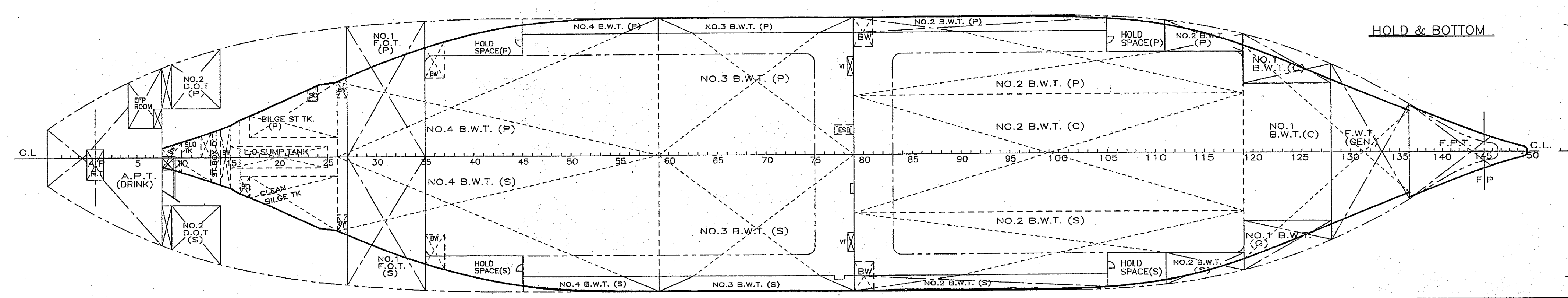
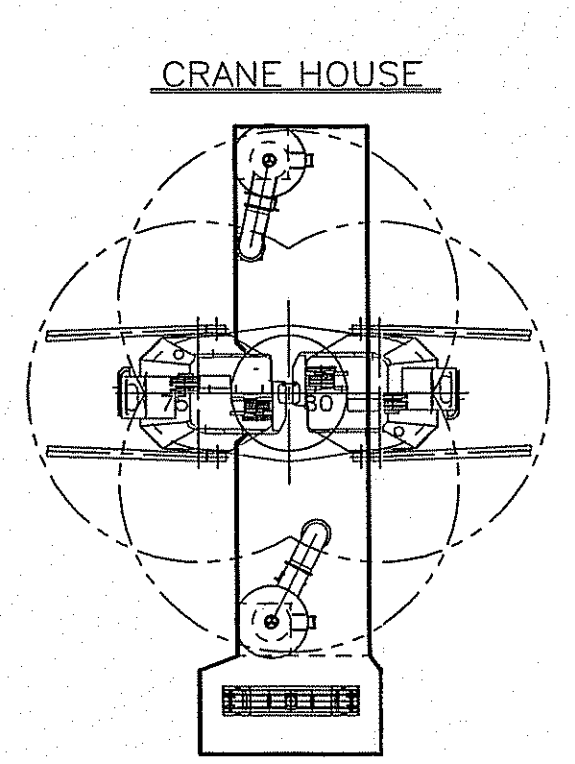
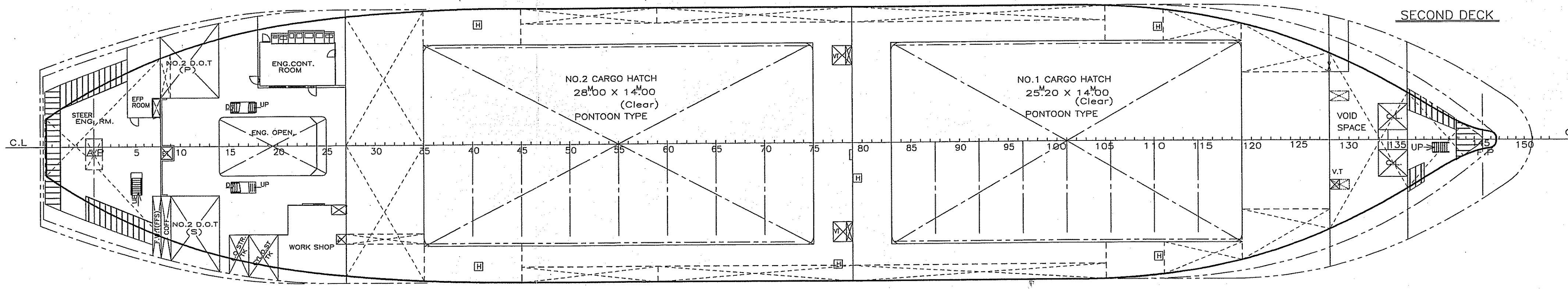
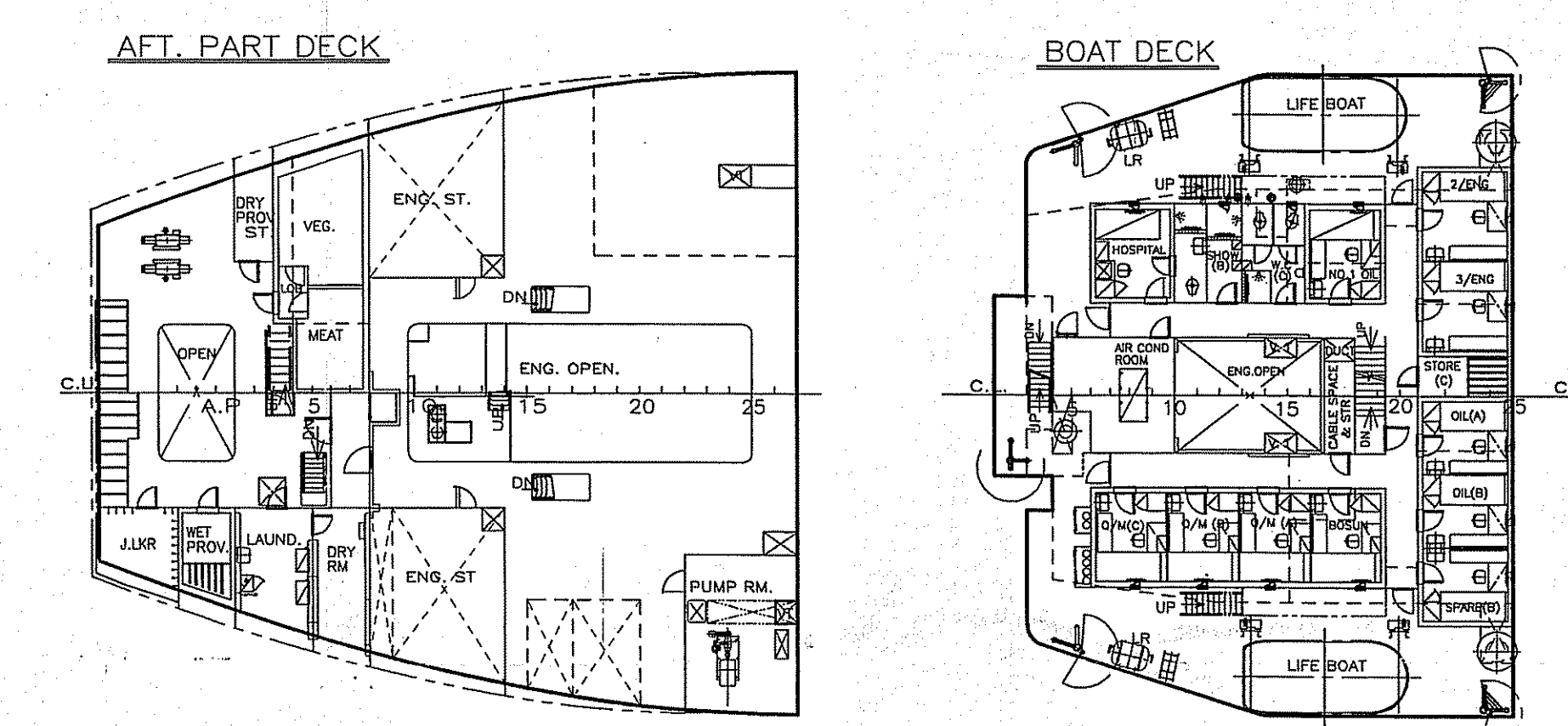
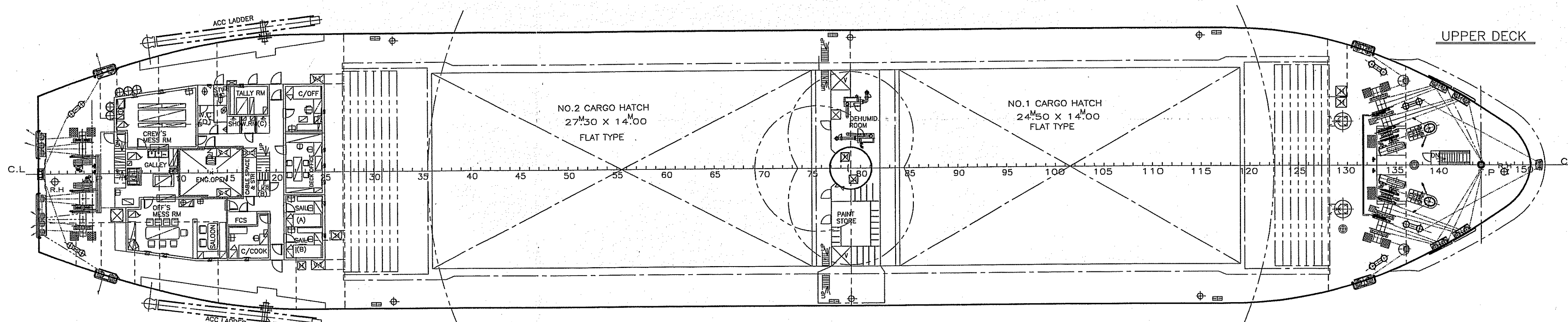
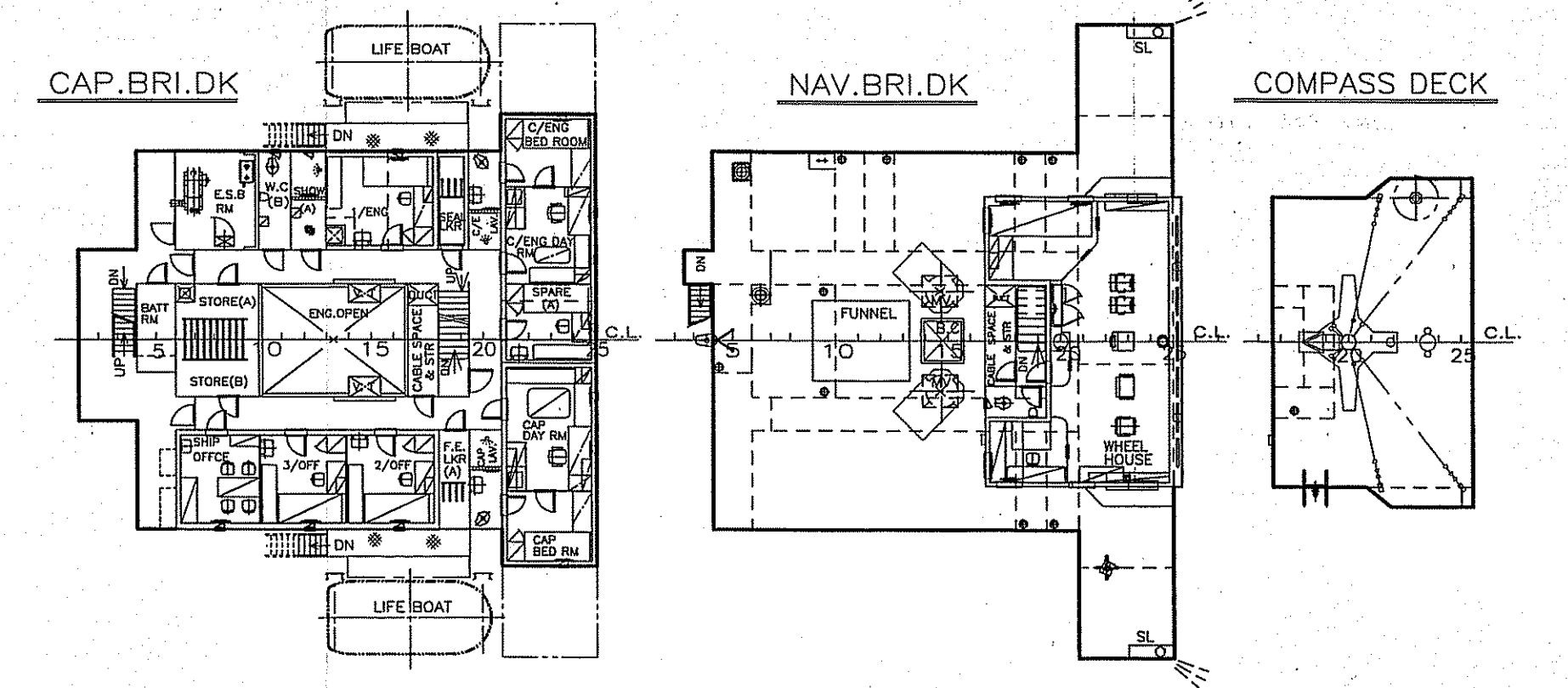
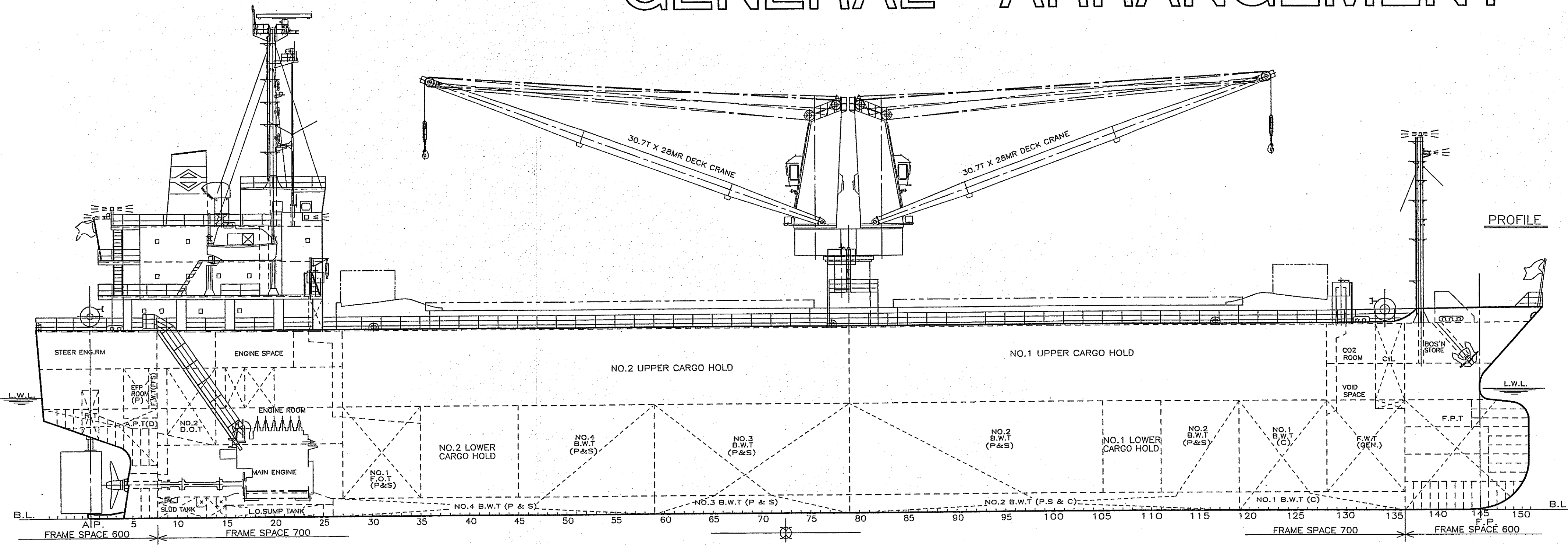


GENERAL ARRANGEMENT

CAUTION
 THIS DRAWING OR DOCUMENT IS THE PROPERTY OF HIGAKI SHIPBUILDING CO., LTD. REPRODUCTION, COPYING UTILIZATION FOR PURPOSES OTHER THAN AGREED, DISCLOSURE TO A THIRD PARTY, ARE STRICTLY SUBJECT TO PRIOR WRITTEN AGREEMENT BY HIGAKI SHIPBUILDING CO., LTD.
 本書は、檣垣造船(株)の財産であり、檣垣造船(株)の文書による事前の承諾なしに、複製あるいは如何なる第三者への開示をしてはならない。

HISTORY
 DRAWN BY THIS WORKS
 30TH Mar. 2004
 ACC. REVISED
 26TH Jul. 2004
 AS FINISHED PLAN
 11TH JUL. 2005



PRINCIPAL DIMENSION	COMPLEMENT					
	DECK DEP	ENG. DEP	BUSS DEP			
LENGTH (O.A.)	108.22 M	CAPTAIN	1	C/ENG	1	
LENGTH (B.P.)	99.80 M	C/OFF	1	1/ENG	1	
BREADTH (MLD)	19.60 M	2/OFF	1	2/ENG	1	
DEPTH (MLD) UP.P.DK.	13.20 M	3/OFF	1	3/ENG	1	
DEPTH (MLD) 2ND DK.	7.80 M					
DRAFT (SUMMER)	8.603 M					
DEAD WEIGHT	10262.68 KT	BOS'N	1	NO.1 OIL	1	
GROSS TONNAGE (ICTM)	7156	Q/M	A/B	3	OIL	2
NET TONNAGE (ICTM)	3131	SAIL	2			
MAIN ENGINE	6L35MC × 1 SET	TOTAL	10	TOTAL	7	
(MCO)	3900 kW × 210 min ⁻¹	TOTAL	7	TOTAL	1	
(NCO)	3315 kW × 199 min ⁻¹	TOTAL NO. OF OFFICER	8 P			
SPEED TRIAL MAX	16.255 KNT	TOTAL NO. OF CREW	10 P			
SPEED SERVICE	abt.13.1 KNT	SPARE	2 P			
HOLD CAPACITY						
GRAIN	14586.83 M ³	GRAND TOTAL	20 P			
BALE	13291.98 M ³					
DECK HEIGHT		SERVICE AREA	GOING			
2ND DK - UP.P. DK	5.40M	CLASSIFICATION	JUL 13 2005			
UP.P. DK - BOAT DK	2.50M					
BOAT DK - CAP.BRI.DK	2.50M					
CAP.BRI.DK - NAV.BRI.DK	2.50M					
NAV.BRI.DK - COMP.DK	2.70M					

CON-FERRED	DESIGNING DEPARTMENT	OWNER	SHIP NAME " APOLLO SARI "	
	HULL DES. SECTION	BONANZA SEIKO SHIPPING, S. A.		
CHIEF			GENERAL ARRANGEMENT	
HEAD				
CHECKED				
DRAWN				
SHIP NO.	CLASS	SCALE	DWG. NO.	
S-583	N K	1/200	H - 200	
HIGAKI SHIPBUILD CO., LTD.				