

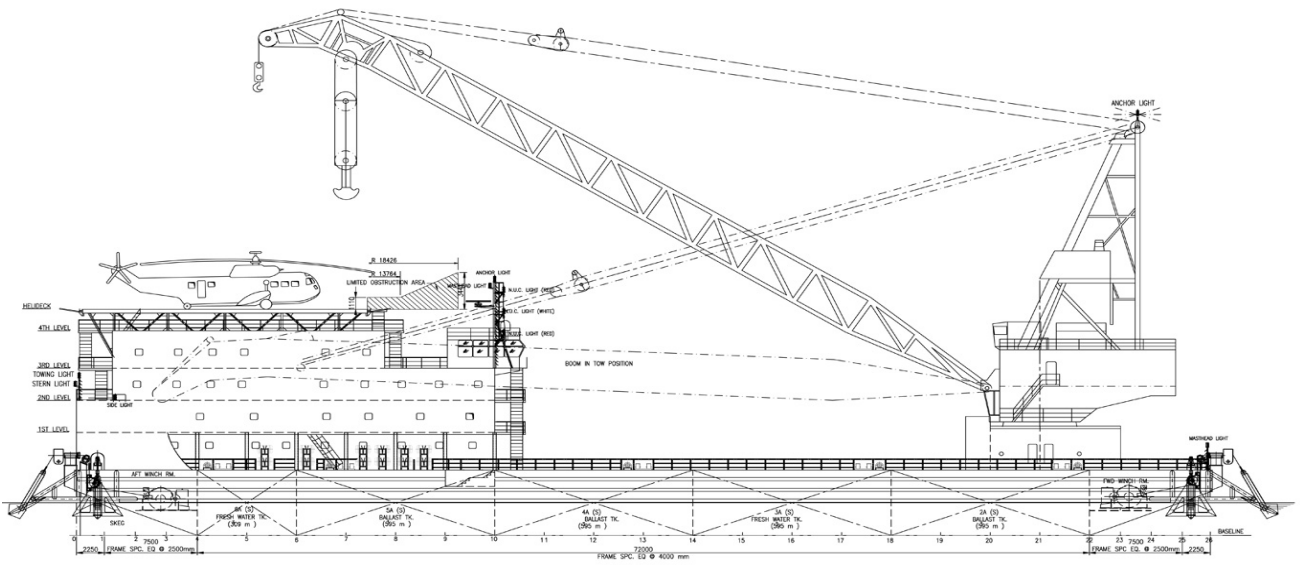
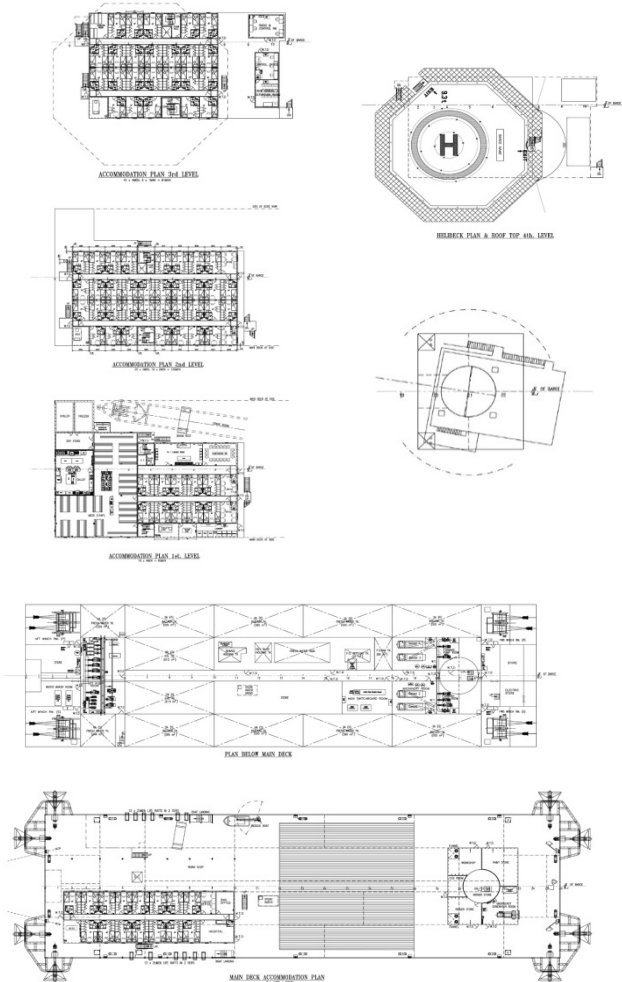
FALCON WARRIOR



300-MEN ACCOMMODATION / DERRICK BARGE

The "Falcon Warrior" is an Accommodation Derrick Barge purpose-built to the high safety standards in accordance to IMO 'MODU CODE' Resolution A414 Chapter XI. She is designed for unrestricted service and has extensive experience in performing and fulfilling the following duties:

- Heavy Lift Offshore Construction
- Hydraulic Workover/ Well Stimulation and Coiled Tubing Services
- Deep Water Mooring Well Intervention capability
- Offshore Conductor Piling/ Platform Construction Support
- Offshore Platform maintenance
- Offshore Hook-Up and Commissioning
- Subsea and Dive Support Services
- Accommodation/ Floatel Services



STANDARD VESSEL SPECIFICATIONS

GENERAL PARTICULARS

Operator	PT. Bayu Maritim Berkah
Year Built	2009 (Year rebuilt and commissioned as Accommodation Derrick Crane Barge)
Classification & Society	RINA 100-A-1.1; PTN SOLL; AP(PL)
Flag State	Tuvalu
Port of Registry	Funafuti

PRINCIPLE DIMENSIONS

L.O.A. (m)	91.52
Length B.P. (m)	91.63
Breadth (m)	27.52
Depth (m)	6.10
Min. Draft (m)	1.922
Extreme Draft (m)	4.50
Deadweight	2,751 MT
Displacement (max)	6,197 MT
Cargo Deck Area (m ²)	1,300
Deck Strength (t/m ²)	14
Deck Cargo	3,000 MT
Cargo Pumps	90 m ³ /hr @ 50m head

ACCOMMODATION

Crew	Total 15 marine crew
Passengers	286 Men
Cabins Layout	4 x 1 man = 4 10 x 2 men = 20 69 x 4 men = 276 Total 84 cabins = 300 Men

1 x Galley	1 x Central Control Room
1 x Radio Room	1 x Messroom
1 x 2 Bed Hospital	1 x Gym
4 x Offices	1 x Conference Room
1 x Lounge/TV Room	

STORAGE CAPACITIES

Fuel Oil Capacity	1,300 m ³
Fresh Water	1,000 MT

COMMUNICATION

Radios VHF	1 x 55 channels 25W marine VHF
Magnetic Compass	Yes
G.P.S.	Yes (Shipmate)

* All particulars believed to be correct but without guarantees

PT. BAYU MARITIM BERKAH

Jl. Tambak No.21A-B
Pegangsaan, Menteng
Jakarta Pusat 10320 - Indonesia

Telephone : +62 21 31920123 (Hunting)
Fax : +62 21 3914903
Email : marketing@bayumaritim.com
Website : www.bayumaritim.com

COMMUNICATION (CONT'D)

Marine SSB Radio	Two (2) units multisynthesiser type
Handheld Walkie Talkie	8 x HEC 920 – 6 Channel VHF/Walkie Talkie
VHF/AM Aero Transmitter Control Station	One (1) unit Yes, Central Control Room with full view of the entire working deck
P.A. Systems	Yes, Throughout The Barge
Wind Speed & Direction Transmitter	One (1) unit
Immarset System	One (1) set mini 'M' c/w telephone & facsimile

MOORING SYSTEM

Mooring Wince/Type/no.	Double side drum type, (4 units)
Wire Size/length	52mm x 1,000M, 6 X 25 IWRC flexible steel wire (8 + 1 spare coil)
Anchor + Buoy	8 +1 spare x 10 tons Anchors & foam filled buoys c/w pendant wire
Tension Meter + CCTV	Tension meter & closed circuit TV monitors are installed
Anchor Rack	Fitted at four (4) corners of the barge for 8-point mooring

OFFSHORE CRANE

Main Crane	Normar Electro Hydraulic Turret Mounted Revolving Crane
Capacity	Main Hoist: 200 metric tons @ 25m radius, 100 metric tons @ 60m radius Auxiliary Hoist: 30 metric tons all radius Luffing: 71.4 degree Outreach : 23m to 60 metre (main hoist), 27m to 67m (Aux. Hoist) Sumitomo SC-500 Crawler Crane Main Hoist: 50 metric tons Outreach: 30 metre (main hoist), 36m (Aux. Hoist)
Auxiliary Crane Capacity	

AUXILIARY EQUIPMENT

Generators	For crane – 2 x CAT 399TA Diesel Generators 1,000 kva, 60 cycles each. For accommodation - 2 x CAT 399TA, 3 phase 60 hz 1,000 kva each, (Total 4,000 kva.)
Life Jackets	600 pieces DOT appoved (200%)
Life Raft	24 x 25 men total 600 men capacity
Rescue Boat	1 x 6 men c/w 25 hp outboard motor
Fire Fighting Equipment	Fire Pump – 1, Fire Monitor – 2, Engine Room & Paint Store Extinguishing System – CO2 system full coverage
Fresh Water Maker	Two (2) x ' REVERSE OSMOSIS' 60 tons/24 hours (Total 120 tons/day)
Sewage Treatment Plant	One (1) unit USCG approved type cap. 300 men

HELIDECK

Dimension	27.40 m x 22.00 m certified for Sikorsky 'S61M'
Standard	In compliance to "MODU CODE' & CLASSIFICATION SOCIETY
Helicopter	'SIKORSKY S61N'

